

AUTOCLAVE VERTICAL

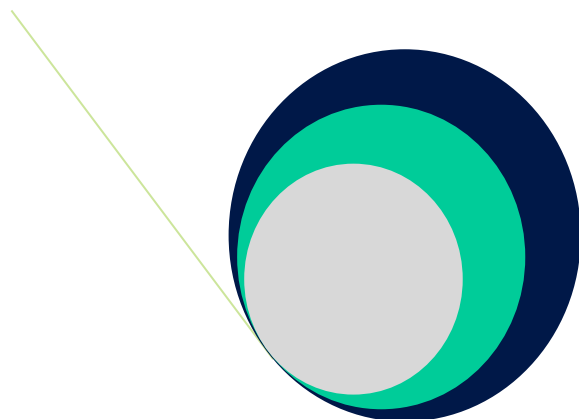
Inner Chamber made of stainless steel and outer wall of M.S Sheet duly enamel painted. Lid is made of M.S. plate with Stainless steel from inside, Support ring and legs are made of mild steel duly enamel painted. Gasket is made of neoprene.

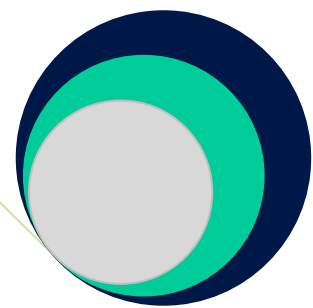
MODEL	INNER DIMENSION (DIA x HT) (in mm)	CAPACITY (Liters)	HEATER LOADER
SRBM-AV22	250x450	22	2.0 KW
SRBM-AV40	300x500	40	2.0 KW
SRBM-AV50	350x550	50	3.0 KW
SRBM-AV78	400x600	78	4.0 KW
SRBM-AV98	450x600	98	4.0 KW
SRBM-AV187	550x750	187	4.0 KW



OPTION:-

- Pressure control Switch/ Pressure cut Off (PCO) device.
- Efficient steam condenser to eliminate steam exhaust into the lab.
- Digital On/Off timer with LED display.
- Low water level Cut off (WCO) device for safety of heating element.
- Analogue 0-60 minutes On/ Off mechanical timer.





AUTOCLAVE VERTICAL (DELUXE MODEL)

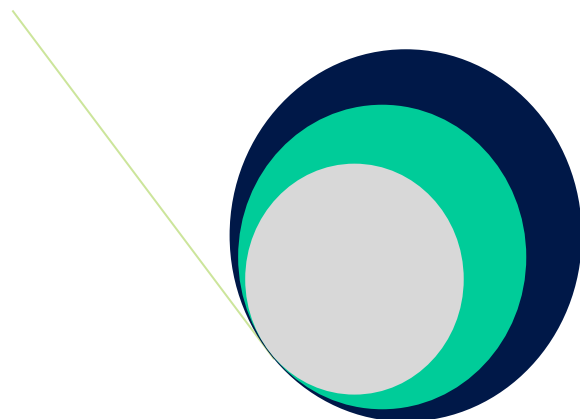
Inner and outer wall both made of Stainless steel. Lid is made of thick machined stainless steel plate. Support ring and legs are also made of stainless steel Gasket is made from imported Silicon rubber.

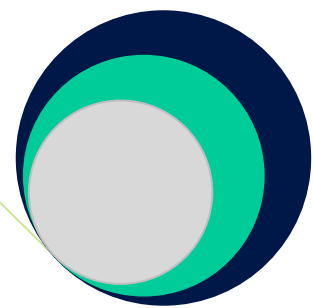
MODEL	INNER DIMENSION (DIA x HT) (in mm)	CAPACITY (Liters)	HEATER LOADER
SRBM-AV22	250x450	22	2.0 KW
SRBM-AV40	300x500	40	2.0 KW
SRBM-AV50	350x550	50	3.0 KW
SRBM-AV78	400x600	78	4.0 KW
SRBM-AV98	450x600	98	4.0 KW
SRBM-AV187	550x750	187	4.0 KW



OPTION :

- Pressure control Switch/ Pressure cut Off (PCO) device.
- Efficient steam condenser to eliminate steam exhaust into the lab.
- e- Digital On/Off timer with LED display.
- Low water level Cut off (WCO) device for safety of heating element.
- Analogue 0-60 minutes On/ Off mechanical timer.





AUTOCLAVE VERTICAL (SEMIAUTOMATIC DIGITAL)

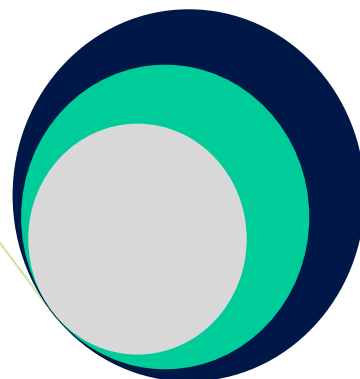
Inner and outer wall both made of Stainless steel. Lid is made of thick machined stainless steel plate. Support ring and legs are also made of stainless steel Gasket is made from imported Silicon rubber. Fitted with Semi- Automatic Digital Controller with Auto time controller system. After the set temperature is attained the timer starts automatically and on completion of set count down/ up time the supply to heaters is cut-off and the system sounds a buzzer alerting user that the cycle is over.

MODEL	INNER DIMENSION (DIA x HT) (in mm)	CAPACITY (Liters)	HEATER LOADER
SRBM-AV22	250x450	22	2.0 KW
SRBM-AV40	300x500	40	2.0 KW
SRBM-AV50	350x550	50	3.0 KW
SRBM-AV78	400x600	78	4.0 KW
SRBM-AV98	450x600	98	4.0 KW
SRBM-AV187	550x750	187	4.0 KW



OPTION :

- Pressure control Switch/ Pressure cut Off (PCO) device.
- Efficient steam condenser to eliminate steam exhaust into the lab.
- Digital Pressure gauge with electronic transducer and syphon.
- Low water level Cut off (WCO) device for safety of heating element.
- Semi automatic Digital (SAD) Controller with 16x2 line alphanumeric
- LCD display in lie of controller with Led Display.





AUTOCLAVE VERTICAL (FULLY AUTOMATIC DIGITAL)

Inner and outer wall both made of stainless Steel. Lid is made of thick machined stainless steel plate. Support ring and legs are also made of stainless steel. Gasket is made from imported Silicon rubber. Fitted with microprocessor based fully automatic logic control system with time buzzer (auto time control). The unit is also fitted with low water level cut off as a standard feature. Fitted with automatic purging and exhaust valve.

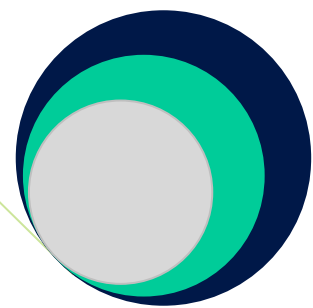
MODEL	INNER DIMENSION (DIA x HT) (in mm)	CAPACITY (Liters)	HEATER LOADER
SRBM-AV22	250x450	22	2.0 KW
SRBM-AV40	300x500	40	2.0 KW
SRBM-AV50	350x550	50	3.0 KW
SRBM-AV78	400x600	78	4.0 KW
SRBM-AV98	450x600	98	4.0 KW
SRBM-AV187	550x750	187	4.0 KW



OPTION :

- Pressure control Switch/ Pressure cut Off (PCO) device.
- Efficient steam condenser to eliminate steam exhaust into the lab.
- Digital Pressure gauge with electronic transducer and siphon.





AUTOCLAVE VERTICAL {HIGH PRESSURE UPTO 30 psi}

Inner and outer wall both made of stainless Steel. Lid is made of thick machined stainless steel plate. Support ring and legs are also made of stainless steel. Gasket is made from imported Silicon rubber. The unit is also fitted with low-water cut-off as a standard feature. Fitted with automatic purging and exhaust valve but a heavy duty high pressure system to work on a maximum pressure of 30 psi instead of 20 psi.

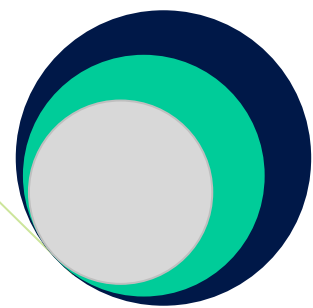
MODEL	INNER DIMENSION (DIA x HT) (in mm)	CAPACITY (Liters)	HEATER LOADER
SRBM-AHP22	250x450	22	2.0 KW
SRBM-AHP 40	300x500	40	2.0 KW
SRBM-AHP50	350x550	50	3.0 KW
SRBM-AHP78	400x600	78	4.0 KW
SRBM-AHP98	450x600	98	4.0 KW
SRBM-AHP187	550x750	187	4.0 KW



OPTION :

- Pressure control Switch/ Pressure cut Off (PCO) device.
- Efficient steam condenser to eliminate steam exhaust into the lab.
- Digital Pressure gauge with electronic transducer and siphon.





AUTOCLAVE HORIZONTAL (CYLINDER DOUBLE WALLED)

This is a double walled unit mounted horizontal on a sturdy, heavy mild steel tubular stand duly painted. Pressure is adjustable from 10 to 20 psi. Fitted with pressure gauge, safety valve and steam release valve. Available with boiler. For units fitted with S.S. Boiler, separate valves for injecting the steam into the main chamber and releasing the steam in atmosphere after use are provided. Hydraulically tested upto 40 psi. Automatic vacuum breaker is provided to break the vacuum in case of formation of vacuum due to steam condensation. Both inner chamber made of S.S. Fitted with a Digital Temperature Indicator to indicate temperature, Automatic pressure Control Switch and Automatic Low Water Level Cut-off. Lid is made of S.S. Plate provided with radical locking system. Without steam jacket.

MODEL	INNER DIMENSION (DIA x HT) (in mm)	CAPACITY (Liters)	HEATER LOADER
SRBM-AHSS22	250x450	22	2.0 KW
SRBM-AHSS40	300x500	40	3.0 KW
SRBM-AHSS50	350x550	50	4.0 KW
SRBM- AHSS78	400x600	78	6.0 KW
SRBM- AHSS98	450x600	98	6.0 KW
SRBM- AHSS187	550x750	187	8.0 KW



OPTION:

- Digital temperature indicator can be supplied in lieu of dial thermometer.
- Microprocessor based digital temperature indicator cum controller in lieu of dial thermometer to cost extra.
- Microprocessor controller with LED display, Automatic digital minute timer and alarm for cycle end.
- PLC Controller with 32 character (2x16 character) backlit alphanumeric LCD display with Automatic digital minute timer and alarm for cycle end. These Controller enables automatic purging of stale air, sterilizing hold time for sterilizing period and cycle with automatic exhaust pressure.
- Digital Pressure gauge with electronic transducer and siphon.



AUTOCLAVE (PORTABLE-SINGLE WALLED MADE OF S.S. 304 GRADE)

Fitted with pressure gauge upto 20 psi, the units had springs loaded safety value for pressure adjustment and a dead weight safety valve. It is hydraulically tested upto 40 psi. And is supplied with electric fittings, cord and plug to work on 220/230 volts A.C. Supply. Supplied complete with tripod stand. Size 300x300 (a) Body made of Aluminum, (b) Body made of S.S. (JOINTLESS), (c) Spare Heating Elements for above

MODEL	INNER DIMENSION (DIA x HT) (in mm)	CAPACITY (Liters)	HEATER LOAD
SRBM -PASW20	325x325	22	2.0KW
SRBM-PASW 20/DI	325x325	22	2.0KW
SRBM-PASW (semiautomatic digital)	325x325	22	2.0KW



TABLE TOP AUTOCLAVE (MICROPROCESSOR BASED)

MODEL	CHAMBER SIZE (DIA x HT) (in mm)	CAPACITY (Liters)	VOLTATIE	POWER
SRBM - BTA 22 (VP)	250x450	22	220V/50Hz	2100 W

FEATURES:-

- B - Type front loading fully automatic autoclave
- With vacuum & dry cycle
- 22 ltrs capacity and microprocessor controlled
- Wrapped/ unwrapped, porous, solid instrument including cotton swabs can be sterilized
- Bow and Dick test qualified, inbuilt sensor for distill water
- Digital display of pressure and temperature
- Double safety lock on the door
- Silicon Gasket prevents any leakage of air
- Diagnostic automatic alarm for any manufacturing
- Can be used at 121degree C/134 degree C during sterilization
- 2 Storage tanks for fresh and used water.
- Chamber Size 25Dmm*450mm
- Net weight 55 kg
- No. of Tray 3 No.

